

表 63 門診醫療費用申報狀況—按西、中、牙醫及分局縣市別分

中華民國九十一年

單位：點，件

分局縣市別 Branch & Locale		總計 Grand Total			件數 Cases
		件數 Cases	點數 Expenditures	平均每件點數 Average Cost Per Case	
<b>總計</b>	<b>Grand Total</b>	<b>317,501,186</b>	<b>224,341,612,685</b>	<b>707</b>	<b>263,411,379</b>
<b>台北分局</b>	<b>Taipei Branch</b>	<b>96,488,565</b>	<b>72,864,705,834</b>	<b>755</b>	<b>79,636,162</b>
台北市	Taipei City	43,940,082	41,452,699,754	943	36,771,040
基隆市	Keelung City	5,640,188	3,938,861,070	698	4,837,717
台北縣	Taipei County	39,969,986	22,854,114,802	572	31,996,970
宜蘭縣	Ilan County	6,202,416	4,177,377,662	674	5,390,221
金門縣	Jinmen County	658,344	397,824,360	604	569,720
連江縣	Lienjiang County	77,549	43,828,186	565	70,494
<b>北區分局</b>	<b>Northern Branch</b>	<b>44,093,743</b>	<b>30,765,393,261</b>	<b>698</b>	<b>37,596,447</b>
新竹市	Hsinchu City	5,706,642	3,469,185,569	608	4,602,271
桃園縣	Taoyuan County	26,864,397	20,514,960,189	764	23,101,148
新竹縣	Hsinchu County	4,940,939	2,862,044,325	579	4,266,170
苗栗縣	Miaoli County	6,581,765	3,919,203,178	595	5,626,858
<b>中區分局</b>	<b>Central Branch</b>	<b>66,926,331</b>	<b>45,631,529,089</b>	<b>682</b>	<b>53,296,775</b>
台中市	Taichung City	20,680,297	16,792,466,315	812	15,849,169
台中縣	Taichung County	21,522,098	12,689,795,016	590	17,094,611
彰化縣	Changhua County	18,109,261	11,916,768,693	658	14,833,282
南投縣	Nantou County	6,614,675	4,232,499,065	640	5,519,713
<b>南區分局</b>	<b>Southern Branch</b>	<b>47,514,042</b>	<b>32,435,244,591</b>	<b>683</b>	<b>39,890,191</b>
台南市	Tainan City	12,737,096	9,668,122,591	759	10,128,297
嘉義市	Chiayi City	7,061,355	5,588,171,255	791	5,966,932
雲林縣	Yunlin County	9,051,223	4,953,047,830	547	7,698,790
嘉義縣	Chiayi County	5,092,753	3,549,385,935	697	4,518,100
台南縣	Tainan County	13,571,615	8,676,516,980	639	11,578,072
<b>高屏分局</b>	<b>Kao-Ping Branch</b>	<b>55,176,148</b>	<b>37,613,922,162</b>	<b>682</b>	<b>46,687,786</b>
高雄市	Kaohsiung City	25,330,906	18,085,989,497	714	21,116,302
高雄縣	Kaohsiung County	16,596,868	11,492,371,415	692	14,166,275
屏東縣	Pyngtung County	11,585,989	7,040,969,806	608	9,924,803
澎湖縣	Penghu County	1,662,385	994,591,444	598	1,480,406
<b>東區分局</b>	<b>Eastern Branch</b>	<b>7,302,357</b>	<b>5,030,817,748</b>	<b>689</b>	<b>6,304,018</b>
花蓮縣	Hualien County	4,625,250	3,278,383,483	709	3,932,330
台東縣	Taitung County	2,677,107	1,752,434,265	655	2,371,688

備註：1.本表"點數"欄不含部分負擔。

2.資料更新日期為92年5月31日。

**Table 63 Ambulatory Care Claims by BNHI Branch and  
Locale—Western Medicine, Chinese Medicine, Dentistry**

2002

Unit : RVU,Case

西醫 Institutions Practicing Western Medicine		中醫 Institutions Practicing Chinese Medicine			牙醫 Dental Institutions		
點數 Expenditures	平均每件點數 Average Cost Per Case	件數 Cases	點數 Expenditures	平均每件點數 Average Cost Per Case	件數 Cases	點數 Expenditures	平均每件點數 Average Cost Per Case
<b>183,713,647,961</b>	<b>697</b>	<b>28,811,703</b>	<b>13,551,208,213</b>	<b>470</b>	<b>25,278,104</b>	<b>27,076,756,511</b>	<b>1,071</b>
<b>59,330,232,960</b>	<b>745</b>	<b>7,705,624</b>	<b>3,981,533,442</b>	<b>517</b>	<b>9,146,779</b>	<b>9,552,939,432</b>	<b>1,044</b>
35,580,993,185	968	3,082,511	1,566,658,786	508	4,086,531	4,305,047,783	1,053
3,349,950,199	692	414,865	202,712,982	489	387,606	386,197,889	996
16,443,017,738	514	3,754,690	1,996,644,884	532	4,218,326	4,414,452,180	1,046
3,583,396,337	665	408,412	192,887,310	472	403,783	401,094,015	993
335,120,297	588	45,146	22,629,480	501	43,478	40,074,583	922
37,755,204	536	-	-	-	7,055	6,072,982	861
<b>25,917,664,904</b>	<b>689</b>	<b>3,233,356</b>	<b>1,494,055,177</b>	<b>462</b>	<b>3,263,940</b>	<b>3,353,673,180</b>	<b>1,027</b>
2,682,518,487	583	586,455	261,493,892	446	517,916	525,173,190	1,014
17,558,729,848	760	1,761,494	846,239,120	480	2,001,755	2,109,991,221	1,054
2,391,846,721	561	336,630	140,180,045	416	338,139	330,017,559	976
3,284,569,848	584	548,777	246,142,120	449	406,130	388,491,210	957
<b>35,762,302,036</b>	<b>671</b>	<b>8,418,387</b>	<b>3,844,399,648</b>	<b>457</b>	<b>5,211,169</b>	<b>6,024,827,405</b>	<b>1,156</b>
13,143,444,799	829	2,979,823	1,400,079,480	470	1,851,305	2,248,942,036	1,215
9,564,604,597	560	2,823,557	1,299,352,133	460	1,603,930	1,825,838,286	1,138
9,616,738,324	648	1,978,021	871,045,815	440	1,297,958	1,428,984,554	1,101
3,437,514,316	623	636,986	273,922,220	430	457,976	521,062,529	1,138
<b>27,010,445,402</b>	<b>677</b>	<b>4,390,764</b>	<b>1,893,192,979</b>	<b>431</b>	<b>3,233,087</b>	<b>3,531,606,210</b>	<b>1,092</b>
7,834,871,028	774	1,552,595	661,369,553	426	1,056,204	1,171,882,010	1,110
4,801,986,250	805	640,669	279,021,000	436	453,754	507,164,005	1,118
4,049,168,418	526	837,083	358,321,254	428	515,350	545,558,158	1,059
3,079,849,909	682	267,302	120,816,458	452	307,351	348,719,568	1,135
7,244,569,797	626	1,093,115	473,664,714	433	900,428	958,282,469	1,064
<b>31,380,820,227</b>	<b>672</b>	<b>4,550,386</b>	<b>2,093,454,172</b>	<b>460</b>	<b>3,937,976</b>	<b>4,139,647,763</b>	<b>1,051</b>
14,900,693,114	706	2,133,111	959,186,503	450	2,081,493	2,226,109,880	1,069
9,745,358,142	688	1,374,236	638,296,392	464	1,056,357	1,108,716,881	1,050
5,884,010,835	593	974,443	458,850,477	471	686,743	698,108,494	1,017
850,758,136	575	68,596	37,120,800	541	113,383	106,712,508	941
<b>4,312,182,432</b>	<b>684</b>	<b>513,186</b>	<b>244,572,795</b>	<b>477</b>	<b>485,153</b>	<b>474,062,521</b>	<b>977</b>
2,797,613,922	711	365,064	175,467,040	481	327,856	305,302,521	931
1,514,568,510	639	148,122	69,105,755	467	157,297	168,760,000	1,073

Notes: 1.The figures of the "Expenditures" column in this table exclude the copayment.

2.The data is updated on May 31, 2003.

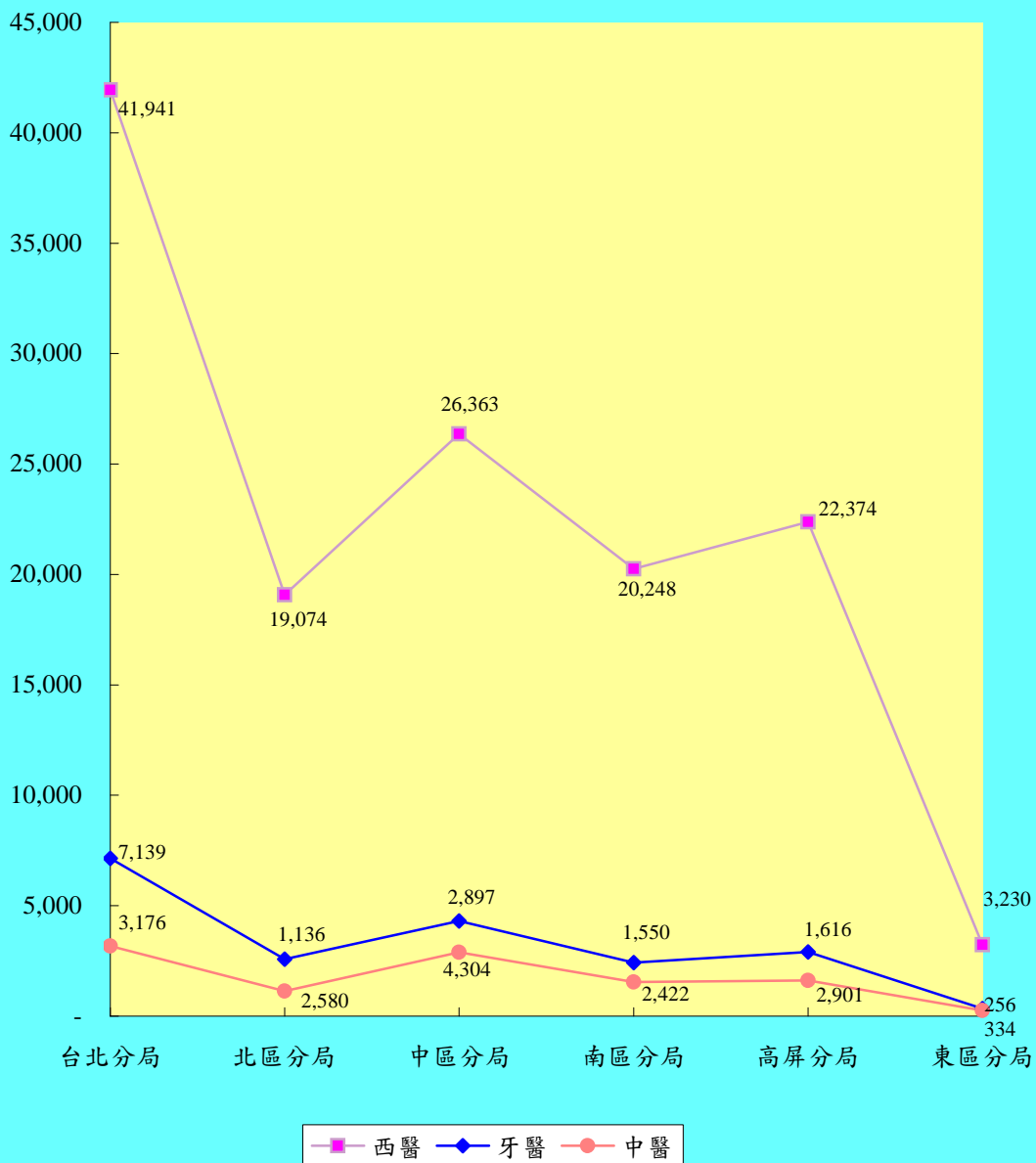
# 門診醫療費用申報狀況—按西、牙、中醫及分局別

## Outpatient Medical Benefit Claim—by Branch and Locale

中華民國八十六年

1997

金額(百萬元)



西醫

牙醫

中醫

台北分局	41,941	7,139	3,176
北區分局	19,074	2,580	1,136
中區分局	26,363	4,304	2,897
南區分局	20,248	2,422	1,550
高屏分局	22,374	2,901	1,616
東區分局	3,230	334	256
	1,332.28	196.80	106.31



圖17 門診醫療費用申報狀況—按西、牙、中醫分  
Graph 17 Outpatient Claims — by Types of Services

中華民國八十六年  
1997

